

SMART DUPLEX FOR SMART INDIA

**FOR A BETTER TOMORROW
INVEST TODAY**



**After Selling plots to more than 5000+ satisfied customers
we are now presenting
DUPLEX COLONY**

**Location :- Chandwey, Dubalia, P.S.- Pithoria
Pin:- 835217 , Jharkhand**



About Us

Rajdhani Homes was established on 15th April in Ranchi, the holy land of Lord Birsa Munda and the capital of the 28th state of the country, Jharkhand. This company is registered with the Government of India. Due to its high quality service, it is also awarded with ISO 9001 - 2015 certificate. The main objective of the company is that no one should remain homeless, everyone should get a house.

We are a professional managed Company, develops and builds high quality properties, with prime location, beautiful & modern design, lifestyle & amenities. Everyone dreams to have his/her own house . So be a part of our family and see how your dream turning into reality at affordable & reasonable price.

Our Bank

Our banks are HDFC, ICICI, AXIS, KOTAK & LIC HOUSING.

Our Chartered Acciuntent

Mr. Roshan Mishra

Construction & Developments

Project look by engineers who are well experienced & Certified.

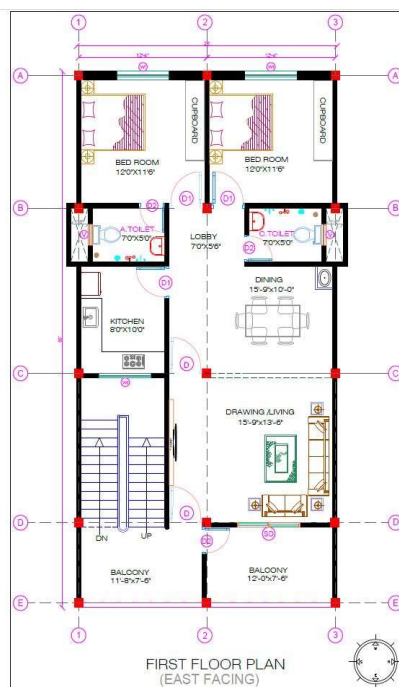
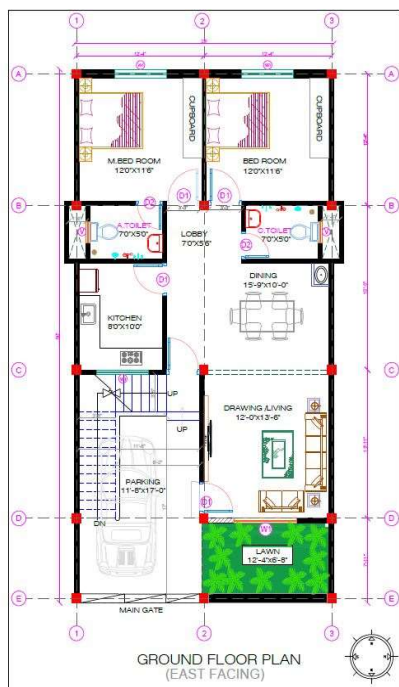
Our Satisfied Customers

Employees of CCL, CMPDI, Tata Steel, Bankers, Professor, Lecturer, Teachers, Doctors, Engineers, IAS, IPS, IFS, Police Department, CO, BDO, SDO, Defrence (CDS, CPO, CRPF), Income Tax, CBI, BSNL, JAP & other state and central government employees

Duplex Price Layout

PLOT SIZE -	1000 SQ.FT. (25'x40')	1250 SQ.FT. (25'x50')	1500 SQ.FT. (30'x50')
TOTAL PRICE -	45 Lac.	55 Lac.	65 Lac.
MODEL NAME -	GANGA	YAMUNA	SARASWATI

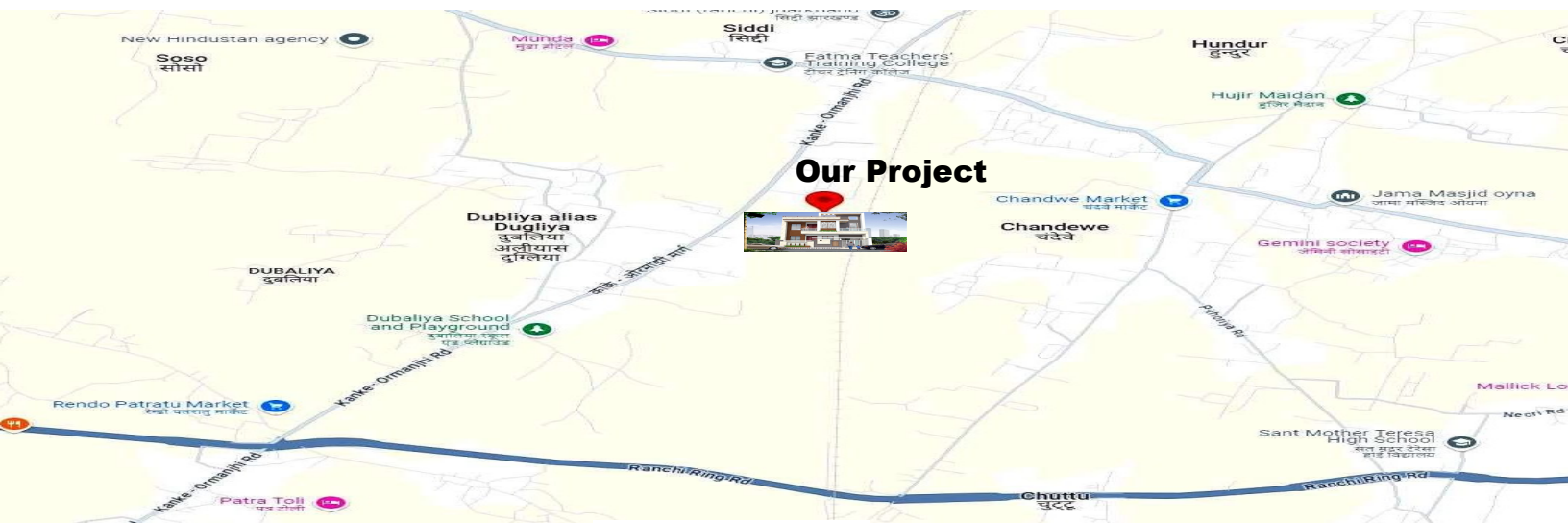




Amenities

1. Outer Boundary wall with Main Gate.
2. 20' wide road.
3. Solar Street Light
4. 24 hrs. Water Supply by Boring.
5. Electricity Supply
6. Drainage System
7. 24 hrs. Security Guard.
8. One lawn with every duplex
9. Personal car parking
10. CCTV camera surveillance
11. Vastu Based Construction
12. Rain water harvesting
13. Children's park with open gym
14. Jogging Tracks with plantation
15. Nearby School, Collage, Hospital, Bank, ATM, Market Complex, Bus Stand, Railway Station, Airport etc.
16. Club House
17. Intercom Facility
18. Pollution free environment
19. Maintenance staff (Electrician, Plumber, Carpenter etc.)
20. Community Hall

Smart City Project with Modern technologies & facilities



Technical Specification

- All top class, quality building materials, trained, skilled & experimented labours, contractor, civil engineer, supervisor with all machines, equipments and instruments will be used in construction
- **Structure** - RCC framed structure (Reinforce cement concrete), M-20 Grade concrete in footing, column, Beam & slab as per plan & design with brick works in cement mortar. (53 grade), TMT Bar- Fe 550 grade used .
- **D.P.C & Anti Termite Treatment** - Damp proof course and Dr. Fixit water proofing chemical & Anti-Termite chemical will be used in foundation.
- **Plaster** - 12 mm thick plaster over internal and external walls.
- **Doors** - Sal wood frame with 30 mm thick, laminated flush Door.
- **Windows** - Fully glazed, powder coated Aluminum window with three track sliding with glass, Mosquito net & Grill.
- **Kitchen** - Black granite on top of kitchen cooking counter / Platform.
-Stainless steel sink, power point for grinder/mixer, freeze, Aquaguard, chimney etc.
-printed glazed ceramic tiles - 2' height above cooking counter/platform.
- **Stainless Steel Grill** in stairs & with glass in balcony.
- **Sanitary fittings**- white glazed sanitary ware fittings of reputed brand, chromium plated all taps & wall mixture with hot and cold line in all bathrooms. One toilet will be Indian & another will be western type pan/comod. Anti skid tiles in toilet flooring and glazed ceramic tiles up to 7' door height level on wall.
- **Flooring** - Glazed vitrified tiles on all indoor flooring and matte finishing, anti-skid tiles on kitchen, bathroom and balcony flooring and heavy duty tiles / pavor block on parking area.
- **Electricals** - Concealed copper wire in pvc condute wiring with moduler switches, socket, MCB & Boxes. A.C. & inventor connection in all rooms.
- **Water Tank** - Best quality 3 layer water tank of 1000 ltr. capacity water supply through common bore well & submersible pump.
- **Stair Top** - Granite with half Moulding.
- **Common septic tank & soak pit** - through sewer line
- **Wall finish** - All internal wall shall be finished with smooth white cement putty, a coat of primer & emulsion paint & external wall finish with weather coat paint.
- **Note** - All building plans, layout, Specification etc. are tentative and subject to variations and modifications as may be decided by the architect / Map passing authority (RRDA /RMC) / management etc. So this brochure is not a legal entity/document .

*** It only describes the conceptual plan to convey the intent and over all idea of company.

RAJDHANI HOMES

Real Estate Pvt. Ltd.

(Architect, Builder, Developer, Interior Works & Complete Real Estate Solution)
An ISO 9001:2015 Certified Company.

Registered Office – 503, 5th Floor, Estate Plaza, Behind Mangal Tower,
Kanta Toli, Dist:- Ranchi, Pin:- 834001, Jharkhand

Mob:-91554-75715, E-mail:info@rajdhanihomes.com, Website:-www.rajdhanihomes.com



***All the rights for adding, deleting, updating or modifying any details or specification at instance of RMC/RRDA or any statuory Authority are reserved by the firm.